

# NEFS 2025: Block 5 Technical Exercises

## A. Finger Positions

### 1. Blocking & Lifting from Open String

a) Primary



b) Secondary



c) Lesser



d) Klezmer



e) Primary



f) Greater



### 2. Hand Frames across 2 Strings

a)



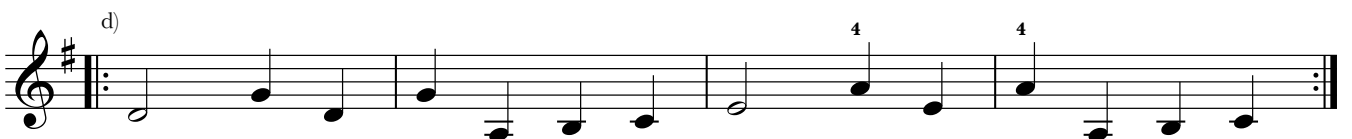
b)



c)



d)



### 3. Blocking & Lifting in Capo 1 Primary

a) A String

b) D String

c) E String

d) G String

## B. 1ve Scales with Bowing Patterns

### 1. A Dorian Exercise

### 2. Diatonic Scales

a) D Mixolydian

b) E Aeolian

c) F-sharp Locrian

d) G Ionian

e) A Dorian

### C. Triad Exercises with Bowing Patterns

#### 1. Tonic - Supertonic

Three staves of musical notation in treble clef, common time (C). Each staff begins with a repeat sign. The first staff is in C major (one sharp), the second in D major (two sharps), and the third in E major (three sharps). Each staff contains two measures of music. The first measure of each staff features a quarter rest followed by a half note, with a bowing pattern 'V' above it. The second measure contains a half note followed by a quarter note, with a bowing pattern 'V' above it. Slurs connect the notes in each measure.

#### 2. 3-Chord Trick

Two staves of musical notation in treble clef, common time (C). Both staves begin with a repeat sign. The first staff is in D major (two sharps) and the second is in E major (three sharps). Each staff contains two measures of music. The first measure of each staff features a half note followed by a quarter note, with a bowing pattern 'V' above it. The second measure contains a half note followed by a quarter note, with a bowing pattern 'V' above it. Slurs connect the notes in each measure.

### D. Diatonic Scales & Triads in One Flat

#### 1. Hexatonic Scales

Three staves of musical notation in treble clef, common time (C). The key signature has one flat (Bb major). Each staff begins with a repeat sign. The first staff contains two measures of music, each with a bowing pattern 'V' above it. The second and third staves each contain two measures of music, with slurs connecting the notes in each measure.

#### 2. 2nd Inversion Triads

Two staves of musical notation in treble clef, common time (C). The key signature has one flat (Bb major). Each staff begins with a repeat sign. The first staff contains two measures of music, each with a bowing pattern 'V' above it. The second staff contains two measures of music, with slurs connecting the notes in each measure.