

FAREWELL TO WHISKY

1. SOURCE

Niel Gow

B \flat Cm B \flat Dm

The first staff of music is in G minor (one flat) and common time. It begins with a treble clef and a key signature of one flat. The melody consists of eighth and sixteenth notes, with some beamed sixteenth notes. Above the staff, four guitar chord diagrams are shown: B \flat (first fret, 2nd string), Cm (1st fret, 3rd string), B \flat (first fret, 2nd string), and Dm (first fret, 4th string).

Gm Cm F B \flat F B \flat

The second staff of music continues the melody. Above the staff, six guitar chord diagrams are shown: Gm (open, 3rd string), Cm (1st fret, 3rd string), F (1st fret, 2nd string), B \flat (first fret, 2nd string), F (1st fret, 2nd string), and B \flat (first fret, 2nd string).

B \flat Cm F B \flat F B \flat

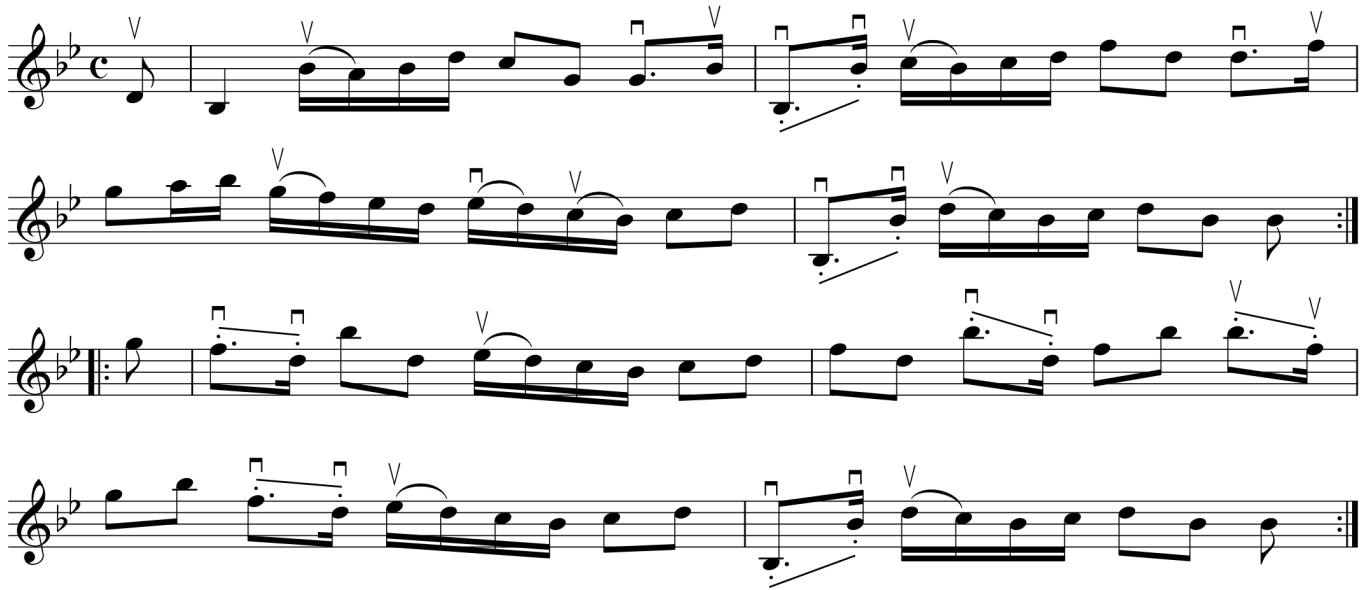
The third staff of music continues the melody. Above the staff, six guitar chord diagrams are shown: B \flat (first fret, 2nd string), Cm (1st fret, 3rd string), F (1st fret, 2nd string), B \flat (first fret, 2nd string), F (1st fret, 2nd string), and B \flat (first fret, 2nd string).

Gm Dm Cm F B \flat F B \flat

The fourth staff of music continues the melody. Above the staff, seven guitar chord diagrams are shown: Gm (open, 3rd string), Dm (first fret, 4th string), Cm (1st fret, 3rd string), F (1st fret, 2nd string), B \flat (first fret, 2nd string), F (1st fret, 2nd string), and B \flat (first fret, 2nd string).

Farewell to Whisky

2. BOWING



3. REALIZATION

